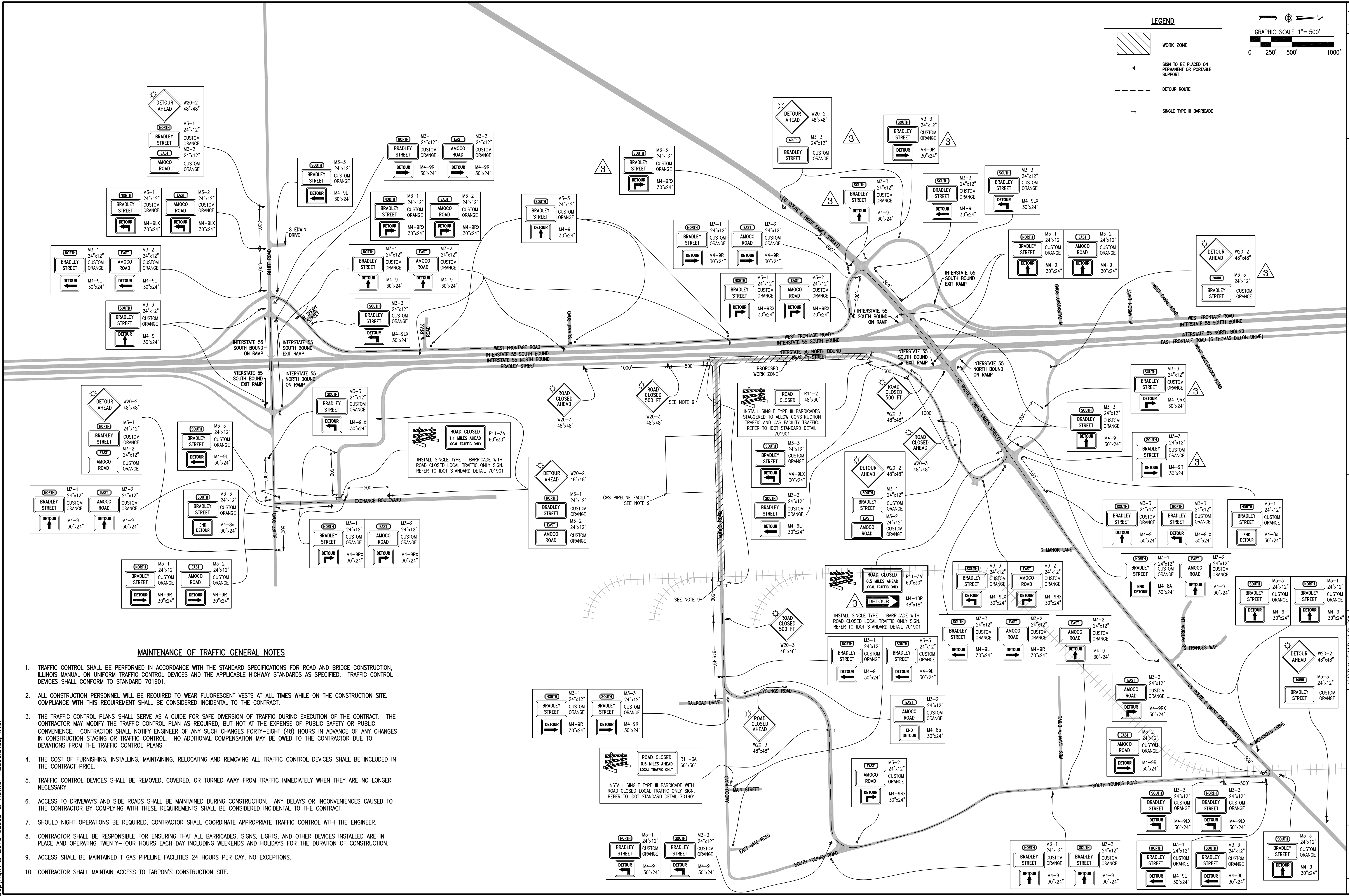
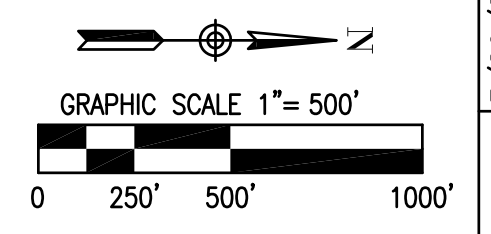
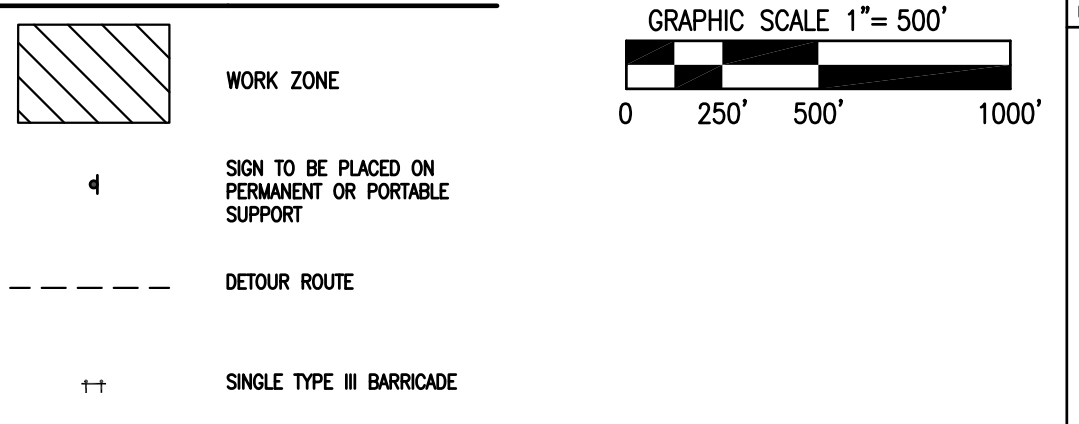


LEGEND



MAINTENANCE OF TRAFFIC GENERAL NOTES

- 1. TRAFFIC CONTROL SHALL BE PERFORMED IN ACCORDANCE WITH THE STANDARD SPECIFICATIONS FOR ROAD AND BRIDGE CONSTRUCTION, ILLINOIS MANUAL ON UNIFORM TRAFFIC CONTROL DEVICES AND THE APPLICABLE HIGHWAY STANDARDS AS SPECIFIED. TRAFFIC CONTROL DEVICES SHALL CONFORM TO STANDARD 701901.
- 2. ALL CONSTRUCTION PERSONNEL WILL BE REQUIRED TO WEAR FLUORESCENT VESTS AT ALL TIMES WHILE ON THE CONSTRUCTION SITE. COMPLIANCE WITH THIS REQUIREMENT SHALL BE CONSIDERED INCIDENTAL TO THE CONTRACT.
- 3. THE TRAFFIC CONTROL PLANS SHALL SERVE AS A GUIDE FOR SAFE DIVERSION OF TRAFFIC DURING EXECUTION OF THE CONTRACT. THE CONTRACTOR MAY MODIFY THE TRAFFIC CONTROL PLAN AS REQUIRED, BUT NOT AT THE EXPENSE OF PUBLIC SAFETY OR PUBLIC CONVENIENCE. CONTRACTOR SHALL NOTIFY ENGINEER OF ANY SUCH CHANGES FORTY-EIGHT (48) HOURS IN ADVANCE OF ANY CHANGES IN CONSTRUCTION STAGING OR TRAFFIC CONTROL. NO ADDITIONAL COMPENSATION MAY BE OWED TO THE CONTRACTOR DUE TO DEVIATIONS FROM THE TRAFFIC CONTROL PLANS.
- 4. THE COST OF FURNISHING, INSTALLING, MAINTAINING, RELOCATING AND REMOVING ALL TRAFFIC CONTROL DEVICES SHALL BE INCLUDED IN THE CONTRACT PRICE.
- 5. TRAFFIC CONTROL DEVICES SHALL BE REMOVED, COVERED, OR TURNED AWAY FROM TRAFFIC IMMEDIATELY WHEN THEY ARE NO LONGER NECESSARY.
- 6. ACCESS TO DRIVEWAYS AND SIDE ROADS SHALL BE MAINTAINED DURING CONSTRUCTION. ANY DELAYS OR INCONVENIENCES CAUSED TO THE CONTRACTOR BY COMPLYING WITH THESE REQUIREMENTS SHALL BE CONSIDERED INCIDENTAL TO THE CONTRACT.
- 7. SHOULD NIGHT OPERATIONS BE REQUIRED, CONTRACTOR SHALL COORDINATE APPROPRIATE TRAFFIC CONTROL WITH THE ENGINEER.
- 8. CONTRACTOR SHALL BE RESPONSIBLE FOR ENSURING THAT ALL BARRICADES, SIGNS, LIGHTS, AND OTHER DEVICES INSTALLED ARE IN PLACE AND OPERATING TWENTY-FOUR HOURS EACH DAY INCLUDING WEEKENDS AND HOLIDAYS FOR THE DURATION OF CONSTRUCTION.
- 9. ACCESS SHALL BE MAINTAINED T GAS PIPELINE FACILITIES 24 HOURS PER DAY, NO EXCEPTIONS.
- 10. CONTRACTOR SHALL MAINTAIN ACCESS TO TARPON'S CONSTRUCTION SITE.